

A photograph of a sandy path leading through a field of tall, dry grasses under a clear blue sky. The path is the central focus, leading the eye from the foreground into the distance. The grasses are a mix of light tan and brown, suggesting a dry or autumnal season. The sky is a uniform, clear blue.

bunnyhomes

the gallery

city collection



beachgrass

the gallery

The Gallery is a substantial first floor two double bedroom apartment that immediately gives you a sense of light and space. There's a triple-aspect open-plan dining and kitchen area with a Juliet balcony and double doors overlooking the communal grounds. Designed around the Scandinavian concept of 'hygge' for wellbeing, warmth and your own escape from the hectic demands of the everyday world.

A real sense of room to relax, considerate storage, to minimize clutter, light-filled living spaces, a gorgeous bathroom and large double bedrooms, little details to make your life easier, touches of warmth and comfort everywhere.

get in touch

Call: 01208 455171

Email: rentals@bunnyhomes.com

Web: bunnyhomes.com

Address: beachgrass apartments,
Church Road, Saltash, Cornwall, PL12 4AE

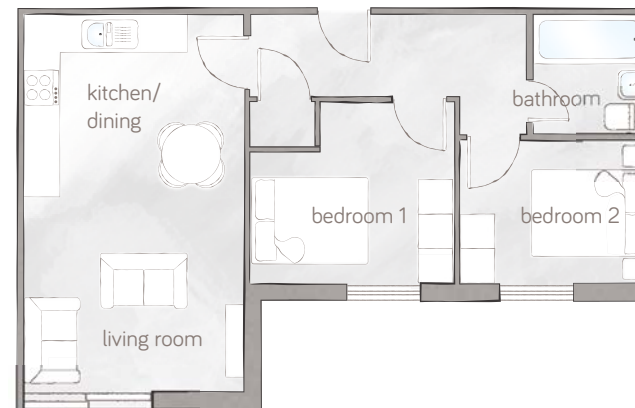
9.



Apartment 9

- Large master bedroom.
- Double guest/2nd bedroom.
- Juliet balcony.
- Space for a washer/dryer.
- Integrated fridge freezer.
- Integrated dishwasher.
- Ceramic easy clean hob.
- Considerate hallway storage for coats and wellies.
- USB sockets.
- Communal Sky Q dish.
- Entrance CCTV for enhanced security.
- Audio door entry system.
- Free car parking.

10.



Apartment 10

- Large master bedroom.
- Double guest/2nd bedroom.
- Considerate hallway storage for coats and wellies.
- Space for a washer/dryer.
- Integrated fridge freezer.
- Integrated dishwasher.
- Ceramic easy clean hob.
- Bathroom with full size bath & over bath shower.
- USB sockets in kitchen/diner and bedroom.
- Communal Sky Q dish.
- Entrance CCTV for enhanced security.
- Audio door entry system.
- Free car parking.

