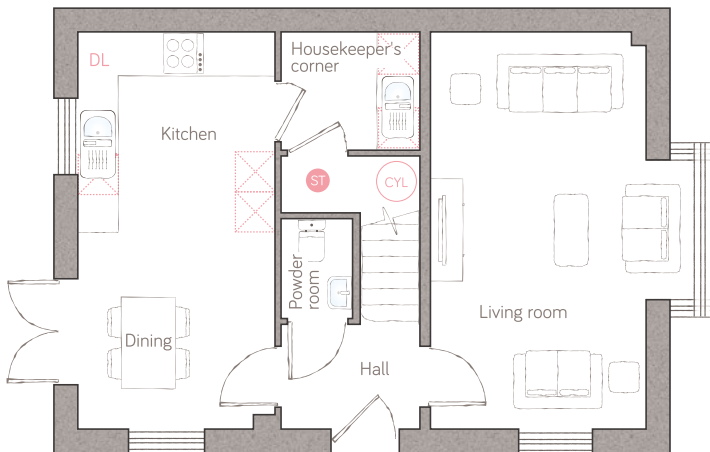




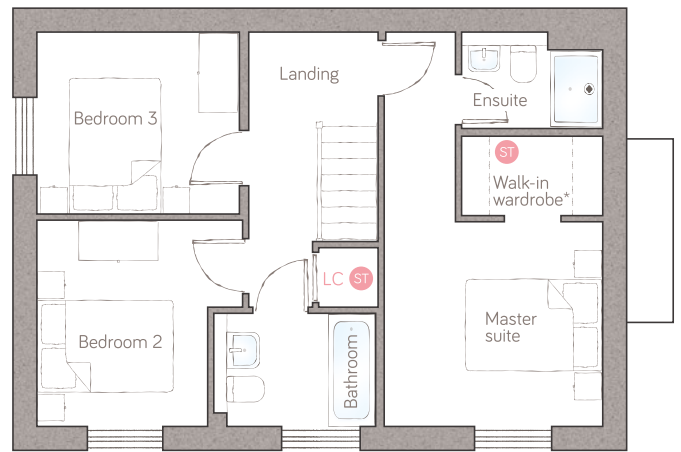
# hedgerow house

CRAFT COLLECTION • 3 BED, 2 BATH

A lovely double-fronted 3-bedroom home that divides the downstairs space equally between living and open plan kitchen/dining, with classic double doors in one, and a stunning bay feature window in the other. The master bedroom is a real showstopper, with walk-in wardrobe space and luxury ensuite.



ground floor



first floor

<b>kitchen</b>	2.96m x 3.03m (9' 8" x 9' 11")	<b>powder room</b>	1.07m x 1.50m (3' 6" x 4' 11")	<b>master suite</b>	3.28m x 3.07m (5.92m max) (10' 9" x 10' 1" (19' 5" max)	<b>ensuite</b>	2.12m x 1.45m (6' 11" x 4' 9")
<b>dining</b>	2.96m x 2.89m (9' 8" x 9' 6")	<b>housekeeper's corner</b>	2.08m x 1.76m (6' 10" x 5' 9")	<b>bedroom 2</b>	3.10m max x 3.10m (10' 2" max x 10' 2")	<b>bathroom</b>	2.43m x 1.70m (8' 0" x 5' 6")
<b>living room</b>	3.90m max x 5.92m (12' 9" max x 19' 5")			<b>bedroom 3</b>	3.06m x 2.73m (10' x 8' 11")		

● Storage DL Demi-larder LC Linen closet A Appliance CYL Air source heat cylinder  
 Plots 10, 122 & 170 are handed.

For illustrative purposes only. Specifications & layouts may be subject to change.  
 \*Available as an upgrade.

**bunnyhomes**

Old Callywith Road, Bodmin, Cornwall PL31 2GT  
 bunnyhomes.com 01208 244971