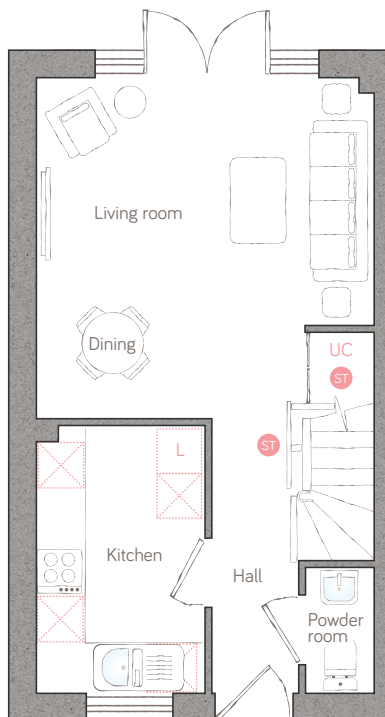




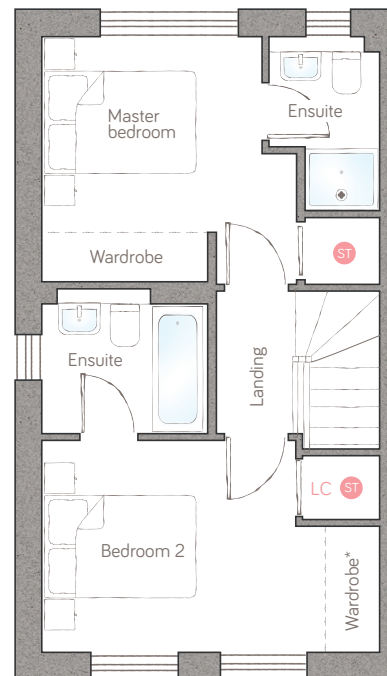
# honeysuckle cottage

CRAFT COLLECTION • 2 BED, 2 BATH

This 2-bedroom semi-detached home is perfectly designed for modern-day living — both double bedrooms have their own ensuites! The light and spacious lounge/diner overlooks the garden through a stunning wall of full-height windows and French doors.



ground floor



first floor

<b>kitchen</b>	2.20m x 3.11m (7' 3" x 10' 2")	<b>powder room</b>	0.90m x 1.65m (2' 11" x 5' 5")	<b>master bedroom</b>	3.33m x 3.21m (10' 11" x 10' 6")	<b>bedroom 2</b>	4.42m x 2.77m (14' 6" x 9' 1")
<b>living/dining</b>	4.42m x 4.86m (14' 6" x 15' 11")			<b>ensuite 1</b>	1.45m x 2.28m (4' 9" x 7' 5")	<b>ensuite 2</b>	2.17m x 1.90m (7' 1" x 6' 2")

ST Storage L Dynamic larder UC Utility cupboard LC Linen closet APpliance

For illustrative purposes only. Specifications and layouts may be subject to change.  
\*Sliding wardrobe shown in bedroom 2 is available as an upgrade.

PLOTS 5 & 21

**bunnyhomes**

Budhyn Mellyon, Carbis Bay, St Ives TR26 2QZ  
bunnyhomes.com 01736 322171