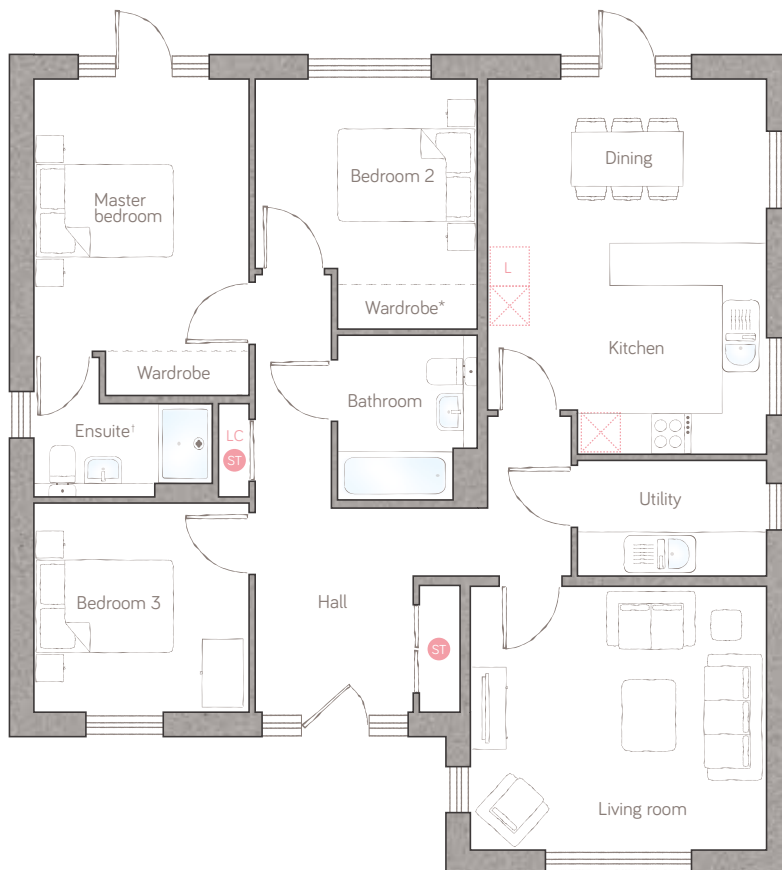




# fox's leap

CRAFT COLLECTION • 3 BED, 2 BATH

With separately-defined sleeping and living areas accessed off a light, open central hallway, this 3-double bedroom bungalow has reinvented one-level living. Both the kitchen and master bedroom lead out onto the garden and there's a handy separate utility too.



## bungalow

kitchen	4.10m x 3.10m (13' 5" x 10' 2")
dining	4.10m x 2.41m (13' 5" x 7' 11")
living room	4.35m x 3.87m (14' 3" x 12' 8")
utility	2.78m x 1.70m (9' 1" x 5' 6")
master bedroom	3.16m x 4.65m (10' 4" x 15' 3")
ensuite	2.62m x 1.37m (8' 7" x 4' 6")
bedroom 2	3.26m x 3.67m (10' 8" x 12' 0")
bedroom 3	3.16m x 3.07m (10' 4" x 10' 1")
bathroom	2.05m x 2.42m (6' 8" x 7' 11")

ST Storage L Dynamic larder LC Linen closet [Appliance Icon] Appliance

For illustrative purposes only. Specifications and layouts may be subject to change.  
 \*Sliding wardrobe shown in bedroom 2 is available as an upgrade.  
 †Ensuite window on plot 3 only.

PLOTS 1 & 3

**bunnyhomes**

Budhyn Mellyon, Carbis Bay, St Ives TR26 2QZ  
 bunnyhomes.com 01736 322171