

A photograph of a sandy path leading through a field of tall, dry grasses under a clear blue sky. The path is the central focus, leading the eye from the foreground into the distance. The grasses are a mix of light tan and brown, suggesting a dry or autumnal season. The sky is a uniform, clear blue.

bunnyhomes

the view

city collection

beachgrass

—

the view

The View is an extra spacious, substantial first floor apartment that immediately gives you a sense of light and space. There's a triple-aspect open-plan dining and kitchen area with a Juliet balcony and double doors overlooking the communal grounds.

Designed around the Scandinavian concept of 'hygge' for wellbeing, warmth and your own escape from the hectic demands of the everyday world.

A real sense of room to relax, clever storage, to minimize clutter, light-filled living spaces, a gorgeous bathroom and large double bedrooms, little details to make your life easier, touches of warmth and comfort everywhere.

get in touch

Call: 01208 455171

Email: rentals@bunnyhomes.com

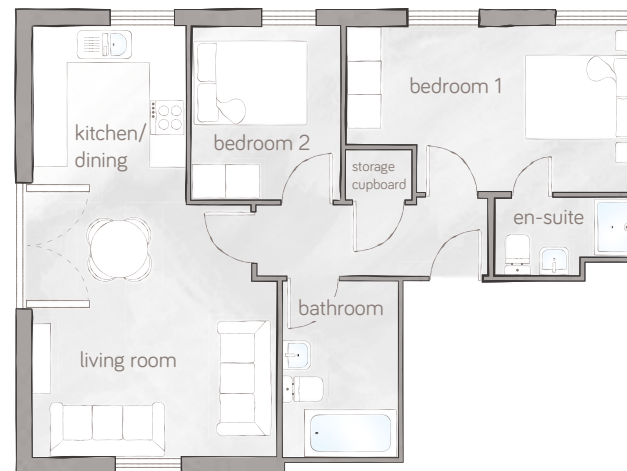
Web: bunnyhomes.com

Address: beachgrass apartments,
Church Road, Saltash, Cornwall, PL12 4AE

3.



6.



Apartment 3

- Master with ensuite.
- Walk-in wardrobe.
- Double guest/2nd bedroom.
- Juliet balcony.
- Space for a washer/dryer.
- Integrated fridge freezer.
- Integrated dishwasher.
- Ceramic easy clean hob.
- Lobby storage for coats & wellies.
- USB sockets.
- Double stacking laundry cupboard.
- Communal Sky Q dish.
- Entrance CCTV for enhanced security.
- Audio door entry system.
- Free car parking.

Apartment 6

- Master two window bedroom with ensuite.
- Double guest/2nd bedroom.
- Juliet balcony.
- Extra large family bathroom.
- Space for a washer/dryer.
- Integrated fridge freezer.
- Integrated dishwasher.
- Ceramic easy clean hob.
- USB socket.
- Considerate storage for coats and wellies.
- Communal Sky Q dish.
- Entrance CCTV.
- Audio door entry system.
- Free car parking.