



Buttercup
MEADOWS

**Hedgerow
House**

Three Bedroom Home

 bunnyhomes

Hedgerow House

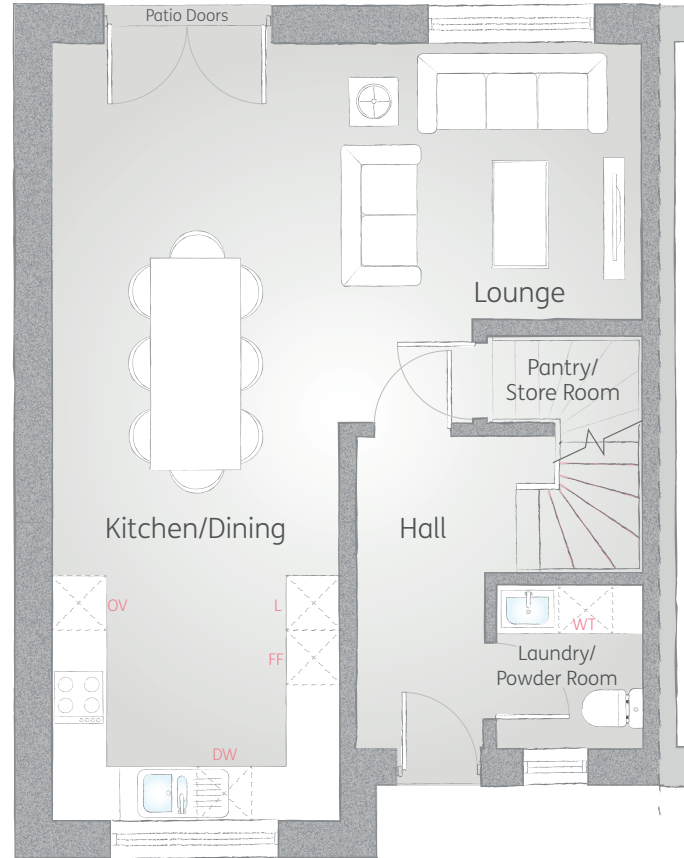
This house welcomes you with a spacious hall leading to the living area which spans the width of the house. Everything has a place in this thoughtfully and practically designed home, with a clever under the stairs pantry and store, a ground floor powder room along with the laundry.

Ground Floor

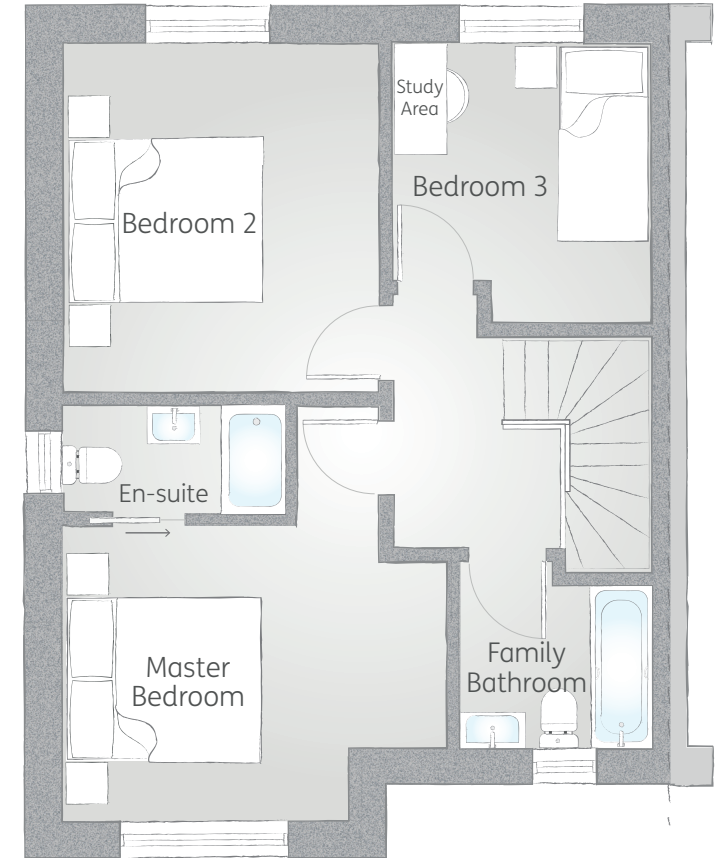
Kitchen/Dining/ Lounge	20' 8" x 27' 7"	6.3m x 8.4m
Laundry/ Powder Room	4' 11" x 5' 11"	1.5m x 1.8m

First Floor

Master Bedroom	13' 5" x 14' 9"	4.1m x 4.5m
En-suite	7' 10" x 3' 7"	2.4m x 1.1m
Bedroom 2	11' 2" x 12' 6"	3.4m x 3.8m
Bedroom 3	9' 2" x 9' 10"	2.8m x 3.0m
Family Bathroom	6' 11" x 6' 7"	2.1m x 2.0m



Ground Floor



First Floor

Three Bedroom Home

Plots 4 & 6 shown, plots 5 & 7 have opposite layout.

Key: Hob, **OV** Oven, **FF** Fridge/Freezer **L** Larder unit, **DW** Dishwasher, **WT** intergrated Washing & Tumble dryer

Sketch plan are for illustrative purposes only. All measurements, sizes and locations of walls, doors, window fittings and appliances are shown conventionally. They are approximate only and cannot be regarded as being a representation either by the Seller or their Agent. We hope that these plans will assist you by providing you with a general impression of the layout of the accommodation. The plans are not to scale nor accurate in detail.

Buttercup
MEADOWS

bunnyhomes

bunnyhomes.com/buttercupmeadows