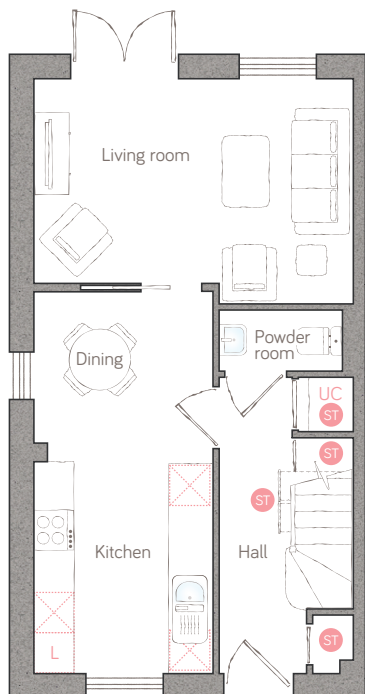




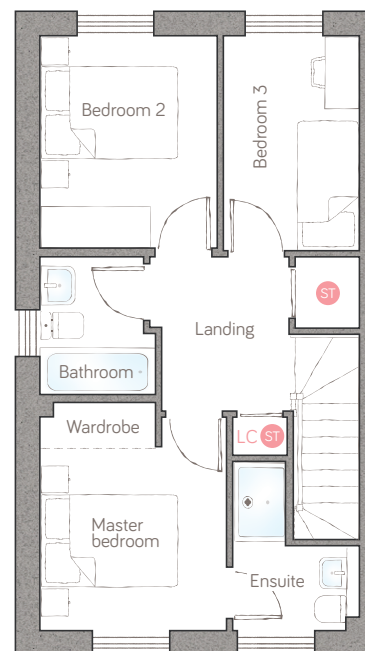
# rose cottage

CRAFT COLLECTION • 3 BED, 2 BATH

A delightful 3-bedroom semi-detached home with a well considered layout. The modern kitchen diner flows through to patio doors and the garden beyond. With an ensuite to the master bedroom and lots of thoughtfully designed-in storage it's the perfect family home.



ground floor



first floor

<b>kitchen/dining</b>	2.63m x 5.61m (8' 7" x 18' 5")	<b>powder room</b>	1.81m x 0.90m (5' 11" x 2' 11")	<b>master bedroom</b>	2.74m x 3.35m (9' 0" x 11' 0")	<b>bedroom 2</b>	2.60m x 3.12m (8' 6" x 10' 2")
<b>living room</b>	4.69m x 3.01m (15' 4" x 9' 10")			<b>ensuite</b>	1.86m x 2.48m max (6' 1" x 8' 1" max)	<b>bedroom 3</b>	2.00m x 3.16m (6' 6" x 10' 4")
				<b>bathroom</b>	1.70m max x 2.02m (5' 6" max x 6' 7")		

ST Storage L Dynamic larder UC Utility cupboard LC Linen closet APpliance

For illustrative purposes only. Specifications and layouts may be subject to change.

PLOTS 19 & 25

**bunnyhomes**

Budhyn Mellyon, Carbis Bay, St Ives TR26 2QZ  
 bunnyhomes.com 01736 322171