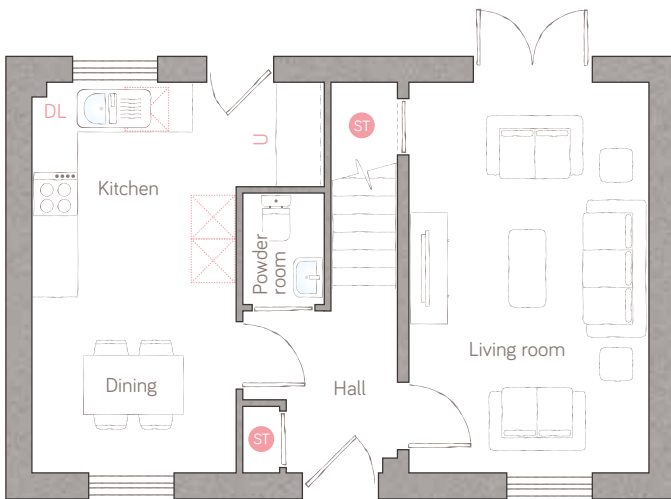




# hedgerow house

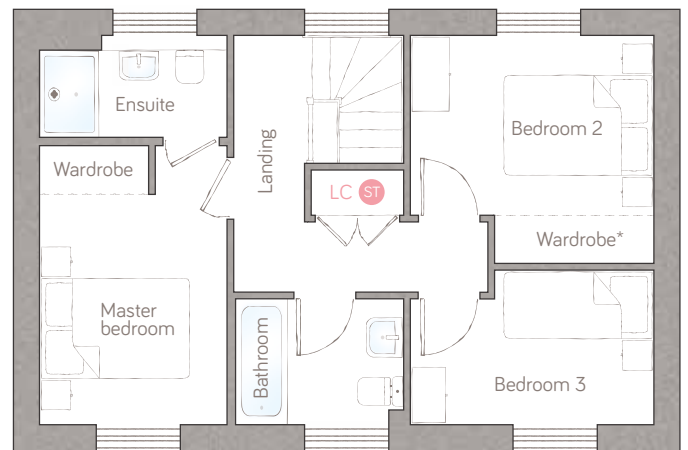
## CRAFT COLLECTION

A gorgeous double-fronted 3-bedroom home, symmetrically designed around a central hallway and staircase. With an open plan kitchen diner and patio doors to the garden from the lounge, it also features an ensuite in the master bedroom and useful downstairs storage.



ground floor

|             |                                 |             |                                |
|-------------|---------------------------------|-------------|--------------------------------|
| kitchen     | 3.92m x 2.82m (12' 10" x 9' 3") | powder room | 1.10m x 1.50m (3' 7" x 4' 11") |
| dining      | 2.73m x 2.43m (8' 11" x 7' 11") |             |                                |
| living room | 3.22m x 5.25m (10' 5" x 17' 2") |             |                                |



first floor

|                |                                 |           |                                |
|----------------|---------------------------------|-----------|--------------------------------|
| master bedroom | 2.53m x 3.76m (8' 3" x 12' 3")  | bedroom 3 | 3.28m x 2.08m (10' 7" x 6' 8") |
| ensuite        | 2.53m x 1.17m (8' 3" x 3' 10")  | bathroom  | 2.26m x 1.70m (7' 5" x 5' 6")  |
| bedroom 2      | 3.28m x 3.07m (10' 7" x 10' 0") |           |                                |

ST Storage DL Demi-larder U Utility area LC Linen closet A Appliance

For illustrative purposes only. Specifications and layouts may be subject to change.  
\*Sliding wardrobes shown in bedrooms 2 are available as an upgrade.

**bunnyhomes**

Gibbs Plantation, Fremington, Barnstaple EX31 3UN  
bunnyhomes.com 01271 411014