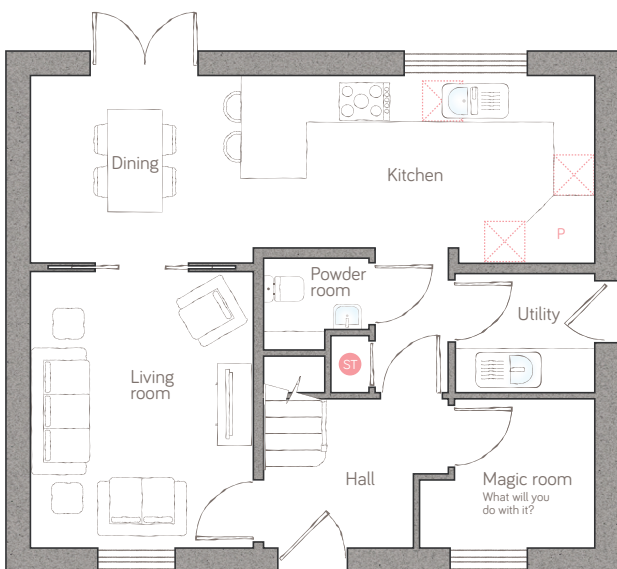




the granary

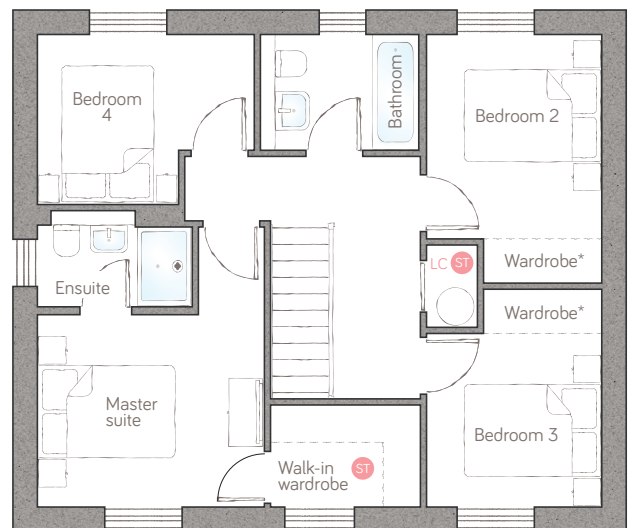
CRAFT COLLECTION • 4 BED, 2 BATH

A beautiful 4-double bedroom home that delivers so much adaptable space. The modern, open plan kitchen diner can flow freely into the lounge and has patio doors to the garden. The hotel-style master suite boasts a fabulous walk-in wardrobe.



ground floor

kitchen	5.19m x 2.76m (17' 0" x 9' 0")	magic room	2.57m x 2.19m (8' 4" x 7' 1")
dining	3.09m x 2.76m (10' 1" x 9' 0")	powder room	1.55m x 1.35m max (5' 1" x 4' 5" max)
living room	3.27m x 4.06m (10' 7" x 13' 3")		



first floor

master suite	3.33m x 4.11m (10' 9" x 13' 4")	bedroom 3	2.57m x 3.20m (8' 4" x 10' 4")
ensuite	2.27m x 1.41m max (7' 5" x 4' 7" max)	bedroom 4	3.18m x 2.49m (10' 4" x 8' 1")
bedroom 2	2.57m x 3.65m (8' 4" x 11' 9")	bathroom	2.32m x 1.70m (7' 7" x 5' 6")

ST Storage P Pantry LC Linen closet A Appliance

For illustrative purposes only. Specifications and layouts may be subject to change.
*Sliding wardrobes shown in bedrooms 2 and 3 are available as an upgrade.

PLOT 15

bunnyhomes

Budhyn Mellyon, Carbis Bay, St Ives TR26 2QZ
bunnyhomes.com 01736 322171