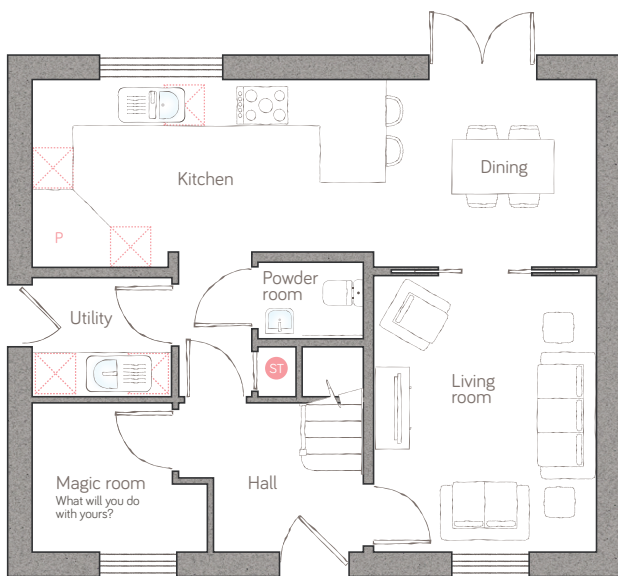




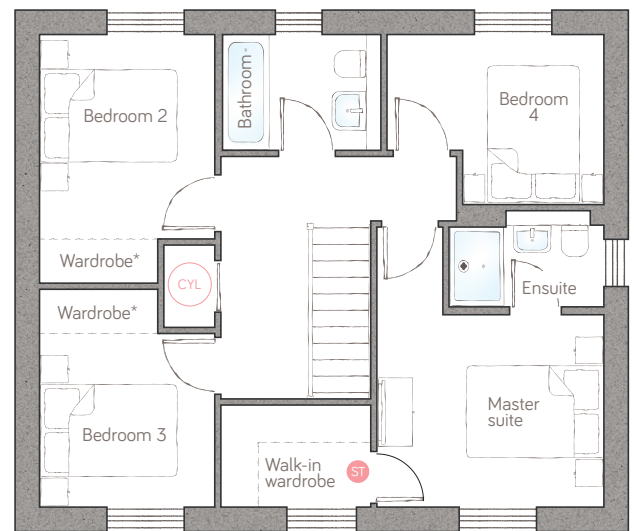
# the granary

CRAFT COLLECTION • 4 BED, 2 BATH

A beautiful 4-double bedroom home that delivers so much adaptable space. The modern, open plan kitchen diner can flow freely into the lounge and has classic double doors to the garden. The hotel-style master suite boasts a fabulous walk-in wardrobe.



ground floor



first floor

kitchen	5.19m x 2.76m (17' 0" x 9' 0")	magic room	2.57m x 2.19m (8' 4" x 7' 1")
dining	3.09m x 2.76m (10' 1" x 9' 0")	powder room	1.55m x 1.12m (5' 1" x 3' 8")
living room	3.27m x 4.06m (10' 7" x 13' 3")		

master suite	3.33m x 4.11m (10' 9" x 13' 4")	bedroom 3	2.57m x 3.20m (8' 4" x 10' 4")
ensuite	2.27m x 1.41m max (7' 5" x 4' 7" max)	bedroom 4	3.18m x 2.49m (10' 4" x 8' 1")
bedroom 2	2.57m x 3.65m (8' 4" x 11' 9")	bathroom	2.32m x 1.70m (7' 7" x 5' 6")

● Storage 
 P Pantry 
 A Appliance 
 C Air source heat cylinder  
**PLOTS 13, 14, 18, 19 & 33**

For illustrative purposes only. Specifications and layouts may be subject to change.  
 \*Sliding wardrobes shown in bedrooms 2 and 3 are available as an upgrade.