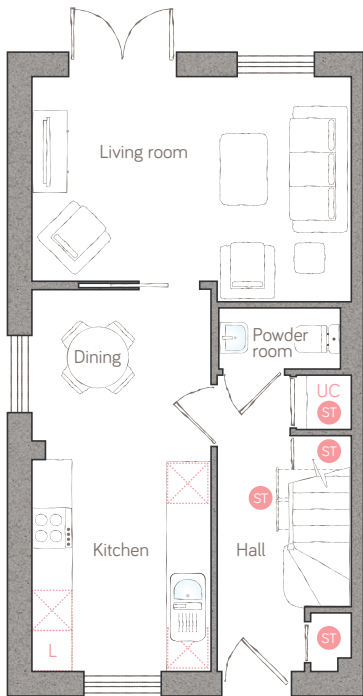




rose cottage

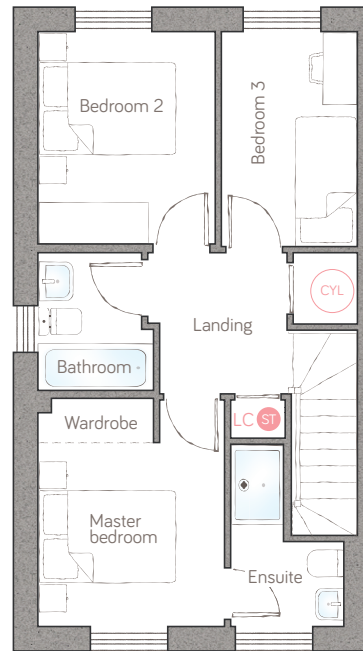
CRAFT COLLECTION • 3 BED, 2 BATH

A delightful 3-bedroom semi-detached home with a well considered layout. The modern kitchen diner flows through to classic double doors and the garden beyond. With an ensuite to the master bedroom and lots of thoughtfully designed-in storage, it's the perfect family home.



ground floor

kitchen/dining 2.63m x 5.61m (8' 7" x 18' 5") powder room 1.81m x 0.90m (5' 11" x 2' 11")
 living room 4.69m x 3.01m (15' 4" x 9' 10")



first floor

master bedroom 2.74m x 3.35m (9' 0" x 11' 0") bedroom 2 2.60m x 3.12m (8' 6" x 10' 2")
 ensuite 1.66m x 2.67m max (5' 5" x 8' 9" max) bedroom 3 2.00m x 3.16m (6' 6" x 10' 4")
 bathroom 1.70m max x 2.02m (5' 6" max x 6' 7")

● Storage L Dynamic larder UC Utility cupboard LC Linen closet A Appliance C Air source heat cylinder
 PLOTS 4, 12 & 30*

For illustrative purposes only. Specifications and layouts may be subject to change.
 *Plot 30 is detached.

bunnyhomes

off A39, Kilkhampton, Bude EX23 9RF
 bunnyhomes.com 01288 696080