

# specs appeal

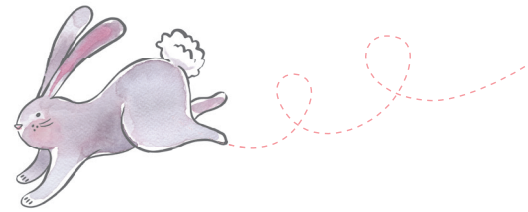
Blackberry Lane, Kilkhampton

Brimming with well-considered design features and bursting with character, our bunnyhomes Craft Collection is inspired by Georgian architecture, beautifully fused with modern day living. There's something about the harmonious symmetry and effortless elegance of the era that holds a special place in our hearts.

## curated with care

We've met with many people along the way in our quest for the finest ingredients for our Craft Collection. No stone has been left unturned. We've scrutinised everything from porcelain tiles to kitchen sinks before settling on the very best spec for our bunnyhomes.

Having travelled far and wide, our trail led us right back home, to the South West. It's with great pride and pleasure that most of our spend is concentrated in our region.



## bunny 'liveability' test

We've been to great lengths to create our Craft Collection homes. We've paced out miles in our life-sized room mock-ups to test and retest the 'liveability' of our layouts. And we've drafted and redrafted endless versions of floorplans to get the right flow, ergonomics and spatial dynamics.

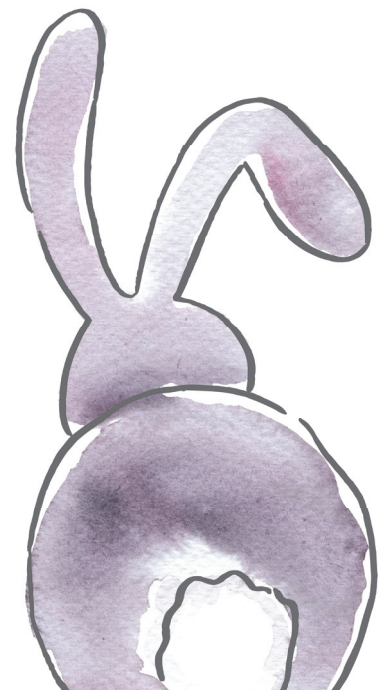
We've also applied the results of research into the affects of home design on our health and wellbeing, bringing Eudaemonia into our bunnyhomes by focusing on good daylight levels, good ventilation and open space.



## icing on the cake

When you buy a Craft Collection home you get our super-spec as standard, inside and out. The differences are clear to see, such as trend-leading kitchens with all the gadgets and gizmos, Villeroy & Boch ceramicware with 'monsoon' showers, super-sized windows, extra-large patios, landscaped front gardens, as well as bespoke, artisan porches, canopies and trelliswork.

Less for you to do; more time for you to enjoy your new bunnyhome. Who could possibly want more? For those that do, there's always 'Winston's World'.



bunnyhomes

off A39, Kilkhampton, Bude EX23 9RF  
bunnyhomes.com 01288 696080

# a little bit of bunny love...

Every bunnyhome is beautifully built with more than just a little bit of bunny love. A modern twist on traditional Georgian inspired architecture, we've created our own thoughtfully considered specifications to make each and every one of our homes special. We've taken the time to do things right; we hope it shows.



## grand entrances

You'll notice the difference as soon as you approach a bunnyhome. What have we done to make them so warm and welcoming?

- In true Georgian style, our entrances are adorned with elegant porches, canopies and woven trellis work, hand crafted by local master craftsmen in Bath.
- Our modern take on traditional Georgian sash windows — beautifully bigger, letting masses of light in and A-rated to keep you snug and energy efficient.
- Extra-generous alfresco dining-sized patios and lawns laid to the rear.
- Our 'Butterfly & Bee' rose at your front door, not just for its scent and prettiness, but to cheer up our lives and improve the wellness of our planet.
- Step inside to see how our higher ceilings create a sense of grandeur, space and openness.



## fabulous kitchens

The heart of every bunnyhome. We know the way to win your heart is with a great kitchen.

- Our kitchens don't just look smart, they work smart too like our exceptional built-in pantries and dynamic-larders.
- A place for everything and everything in its place — stacks of cupboards and drawers and plenty of sockets.
- Trend-leading, contemporary cabinetry as standard in a choice of delicious finishes, or upgrade from our Butler's Pantry options in bunny interiors.
- For the chef of the household — beautiful Smeg appliances for precision cooking, complete with all the programmes and functionality you could dream of.
- We scoured the country for the perfect kitchen makers, to bring you British cabinetry at its finest.



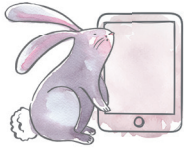
## glam bathrooms

The smallest rooms of a bunnyhome by no means receive the least attention. We go for high performance meets hotel style glamour every time.

- World-famous Villeroy & Boch ceramicware to all bathrooms and ensuites.
- State-of-the-art, recessed showers with overhead 'monsoon' and convenient hand-held sprayheads.
- Wall-mounted, rimless toilets in most of our bunnyhomes — so much more stylish, hygienic and easier to clean.
- Soak in comfort for even longer in our heat-retaining steel baths. They feature hidden bath fillers so there's no taps at either end!
- Tiling, in extra large formats curated from trend-setters Porcelanosa.

bunnyhomes

off A39, Kilkhampton, Bude EX23 9RF  
[bunnyhomes.com](http://bunnyhomes.com) 01288 696080



## techy stuff

We live in a hi-tech world so the least we can do is make sure our bunnyhomes are #wired to go.

- No Wi-Fi? No problem. We install Cat-6 cabling direct into all the rooms you need it.
- Voice, app or touchpad-controlled 'HIVE' heating system — what could be simpler?
- You'll find more than enough USB ports in every Craft Collection home, along with thoughtfully located sockets.
- Powered by 75% energy extracted from the air and 25% electricity, our Daikin air source heat pumps heat your home with A+++ energy efficiency.



## clever storage

Storage space is usually a rarity in most new homes but we see it as essential; it's all about bunnyspace — one of our 'liveability test' missions for every bunnyhome.

- You'll always find well-placed, built-in cupboards and a pantry or dynamic-larder.
- Keep your hallway clutter-free. Most bunnyhomes feature tailor-made understairs pull-out drawers — for loads of space-saving storage.
- Sliding wardrobes in a choice of styles are fitted to all master bedrooms and are available as a 'bunny interiors' upgrade from our Peculiar Mr Fox range in other rooms.



## little details

Attention to detail is what we do at bunnyhomes. Here's just a few of the not so little details we think make a big difference:

- Solid-core internal doors made from A-grade American white oak veneer for a natural oak finish.
- No more magnolia. We use cotton tail white, giving you a blank canvas for your interiors that's modern, fresh and bright.
- Even our bathroom basin plugs are a considered detail — they're white instead of chrome so they blend in with the ceramic.
- You'll notice our front outdoor light isn't just any old light, it's stylishly designed to complement your home.



## built to last

Every bunnyhome is built beautifully, combining traditional craft skills with modern day methods to create the best of both worlds.

- Bricks are just bricks, right? Not our bunnyhomes bricks. We hand-picked ours for their particular tone, texture and patina so they look just as we want them, and the same goes for our rough cast render and regional stone features.
- Could ours be the quietest of newbuild homes? The way we fit our floor joists creates a third less deflection than standard, so they're less likely to squeak.
- We take our time to do the job properly, employing our own bunnyhomes build team, supported by local skilled home crafters.



## tell me more!

Just give the bunny team a call.

01288 696080  
[bunnyhomes.com](http://bunnyhomes.com)