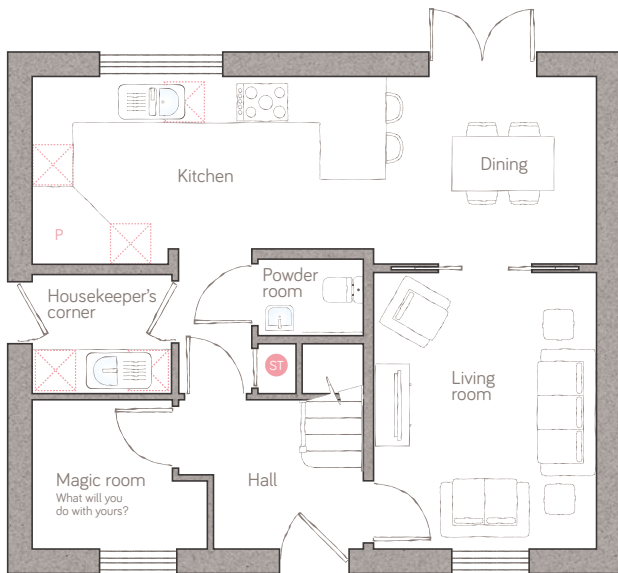




# the granary

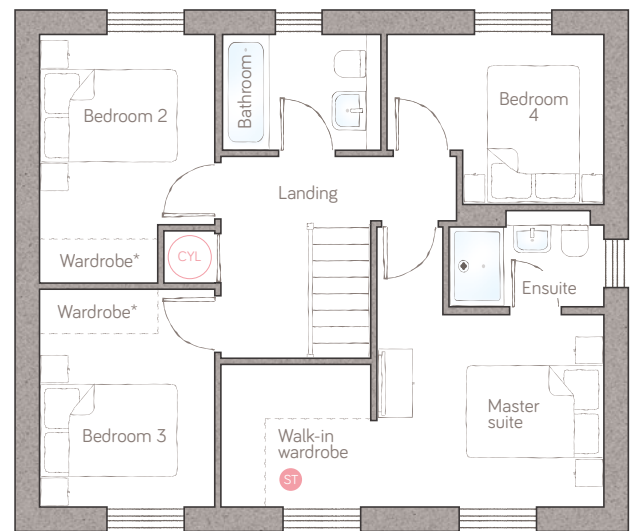
CRAFT COLLECTION • 4 BED, 2 BATH

A beautiful 4-double bedroom home that delivers so much adaptable space. The modern, open plan kitchen diner can flow freely into the lounge and has classic double doors to the garden. The hotel-style master suite boasts a fabulous walk-in wardrobe.



ground floor

<b>kitchen</b>	5.19m x 2.76m (17' 0" x 9' 0")	<b>magic room</b>	2.57m x 2.19m (8' 4" x 7' 1")
<b>dining</b>	3.09m x 2.76m (10' 1" x 9' 0")	<b>powder room</b>	1.55m x 1.12m (5' 1" x 3' 8")
<b>living room</b>	3.27m x 4.06m (10' 7" x 13' 3")	<b>housekeeper's corner</b>	2.04m x 1.75m (6' 8" x 5' 8")



first floor

<b>master suite</b>	3.33m x 4.11m (10' 9" x 13' 4")	<b>bedroom 2</b>	2.57m x 3.65m (8' 4" x 11' 9")
<b>ensuite</b>	2.27m x 1.41m max (7' 5" x 4' 7" max)	<b>bedroom 3</b>	2.57m x 3.20m (8' 4" x 10' 4")
<b>walk-in wardrobe</b>	2.20m x 1.50m (7' 2" x 4' 11")	<b>bedroom 4</b>	3.18m x 2.49m (10' 4" x 8' 1")
		<b>bathroom</b>	2.32m x 1.70m (7' 7" x 5' 6")

● Storage P Pantry □ Appliance ☉ Air source heat cylinder  
Plot 10

For illustrative purposes only. Specifications & layouts may be subject to change.  
\*Wardrobes in bedrooms 2 & 3 are available as an upgrade.

**bunnyhomes**

Bramble Lane, Kilkhampton, Bude EX23 9FR  
bunnyhomes.com 01288 696080