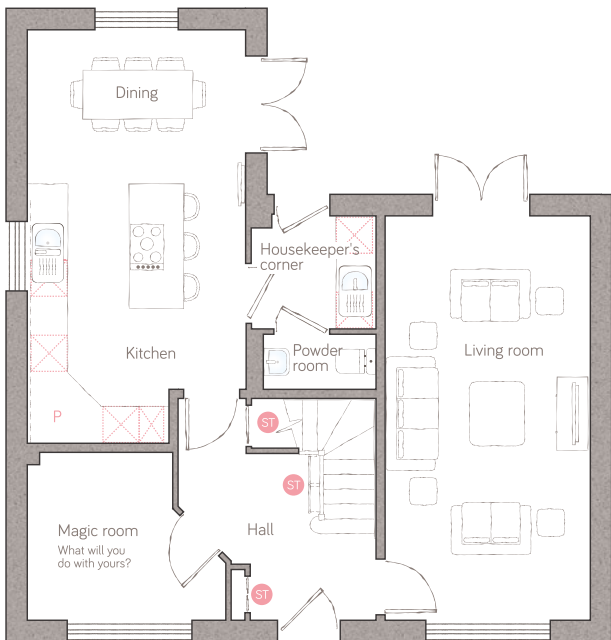




the old parsonage

CRAFT COLLECTION • 4 BED, 3 BATH

This grand, double-fronted, 4-bedroom home first welcomes you into a beautiful galleried hallway. It boasts two ensuites and a family bathroom upstairs, as well as a powder room downstairs and it features not one, but two sets of classic double doors onto the garden from both the large double aspect lounge and the dazzling island kitchen.



ground floor



first floor

kitchen	3.56m x 4.22m (11' 8" x 13'10")	magic room	3.23m x 2.74m (10' 7" x 8' 11")
dining	3.56m x 2.52m (11' 8" x 8' 3")	powder room	1.84m x 0.90m (6' 0" x 2' 11")
living room	3.35m x 6.60m (10' 11" x 21' 7")	housekeeper's corner	1.84m x 2.03m (6' 06" x 6' 8")

master bed	3.18m x 3.91m (10' 5" x 12' 10")	ensuite	2.13m x 1.73m max (7' 0" x 5' 8" max)
bedroom 2	3.56m x 3.24m (11' 8" x 10' 7")	ensuite 2	2.55m max x 2.08m max (8' 4" max x 6' 10" max)
bedroom 3	3.41m x 2.60m (11' 2" x 8' 6")	bathroom	2.55m max x 2.17m (8' 4" max x 7' 1")
bedroom 4	2.55m x 2.45m (8' 4" x 8' 0")		

ST Storage P Pantry A Appliance C Air source heat cylinder
Plot 111 as shown. Plots 112, 133, 144 & 158 are handed.

For illustrative purposes only. Specifications & layouts may be subject to change.
*Available as an upgrade.

bunnyhomes

Old Callywith Road, Bodmin, Cornwall PL31 2GT
bunnyhomes.com 01208 244971