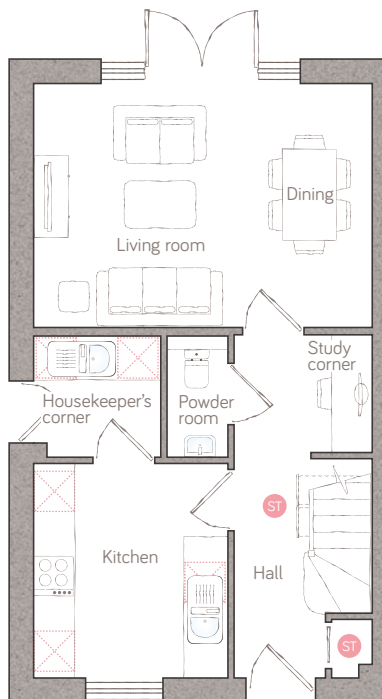




# rose cottage

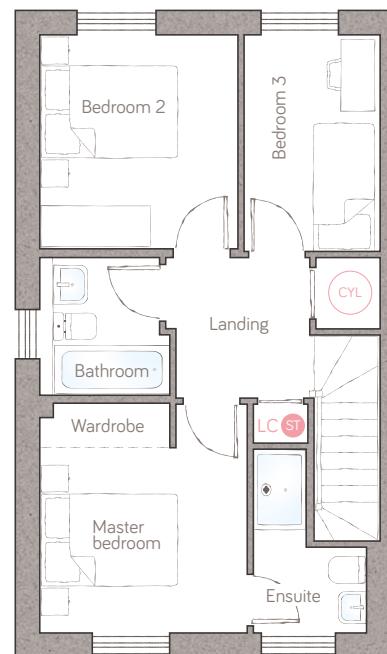
CRAFT COLLECTION • 3 BED, 2 BATH

A delightful 3-bedroom semi-detached home that's packed with well-considered features, such as a study corner, a built-in hall cupboard and understairs storage. The living/dining room is bathed in light, with tall windows and classic double doors onto the garden, and the master bedroom boasts an ensuite.



ground floor

living/dining 4.98m x 3.57m (16' 4" x 11' 8")  
 kitchen 3.10m x 2.89m (10' 1" x 9' 5")  
 powder room 0.90m x 1.78m (2' 11" x 5' 9")  
 housekeeper's corner 1.86m x 1.78m (6' 1" x 5' 10")



first floor

master bedroom 3.03m x 3.35m (9' 11" x 11' 0")  
 ensuite 1.66m x 2.67m max (5' 5" x 8' 9" max)  
 bathroom 1.90m x 2.02m (6' 2" x 6' 7")  
 bedroom 2 2.89m x 3.12m (9' 6" x 10' 2")  
 bedroom 3 2.00m x 3.16m (6' 6" x 10' 4")

ST Storage LC Linen closet [Appliance icon] Appliance [Air source heat cylinder icon] Air source heat cylinder  
 Plots 7 & 24

For illustrative purposes only. Specifications & layouts may be subject to change.

**bunnyhomes**

Bramble Lane, Kilkhampton, Bude EX23 9FR  
 bunnyhomes.com 01288 696080