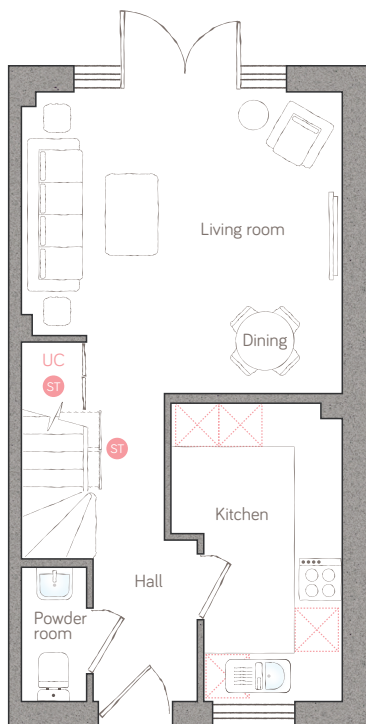




# honeysuckle cottage

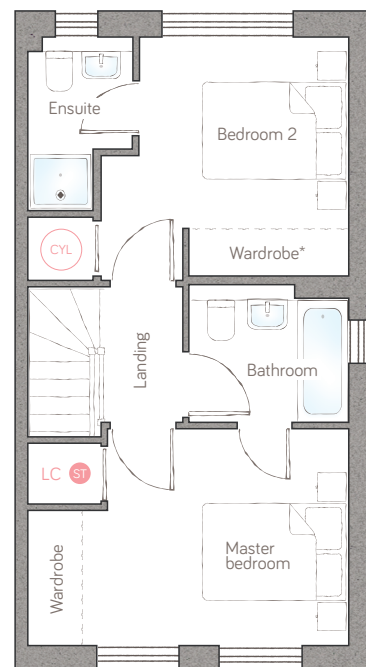
CRAFT COLLECTION • 2 BED, 2 BATH

This 2-bedroom semi-detached home is perfectly designed for modern-day living — both double bedrooms have ensuite bathrooms. The light and spacious lounge/diner overlooks the garden through a stunning wall of full-height windows and classic double doors.



ground floor

kitchen 2.36m x 4.11m (7' 9" x 13' 5") powder room 0.90m x 1.85m (2' 11" x 6' 1")  
 living/dining 4.42m x 4.16m (14' 6" x 13' 8")



first floor

master bedroom 4.42m x 2.97m (14' 6" x 9' 9") bedroom 2 3.41m x 3.28m (11' 2" x 10' 9")  
 bathroom/ensuite 2.20m x 1.70m (7' 2" x 5' 6") ensuite 1.45m x 2.39m (4' 9" x 7' 10")

Storage UC Utility cupboard LC Linen closet [Appliance] Air source heat cylinder

PLOTS 7 & 9

For illustrative purposes only. Specifications and layouts may be subject to change.  
 \*Sliding wardrobe shown in bedroom 2 is available as an upgrade.

**bunnyhomes**

off A39, Kilkhampton, Bude EX23 9RF  
 bunnyhomes.com 01288 696080