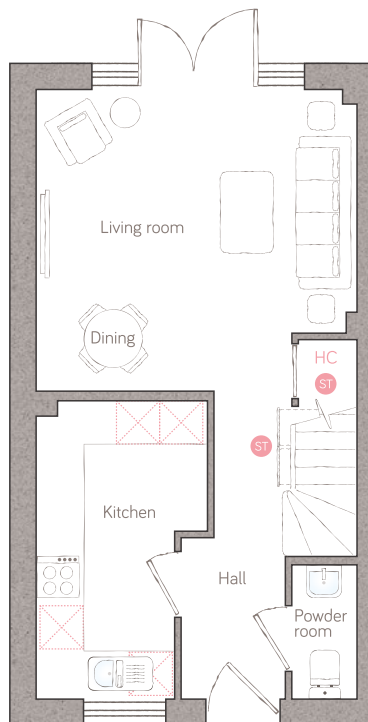




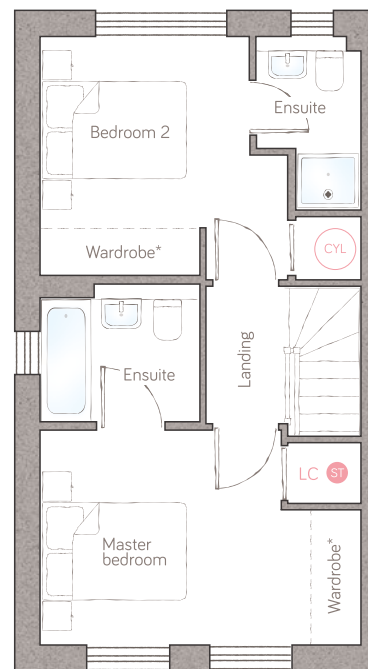
# honeysuckle cottage

CRAFT COLLECTION • 2 BED, 2 BATH

This 2-bedroom home is perfectly designed for modern-day living — both double bedrooms have ensuite bathrooms. The light and spacious lounge/diner overlooks the garden through oversized windows and classic double doors.



ground floor



first floor

kitchen 2.36m x 4.11m (7' 9" x 13' 5") powder room 0.90m x 1.85m (2' 11" x 6' 1")  
 living/dining 4.42m x 4.16m (14' 6" x 13' 8")

master bedroom 4.42m x 2.97m (14' 6" x 9' 9") master ensuite 2.20m x 1.70m (7' 2" x 5' 6")  
 bedroom 2 3.41m x 3.28m (11' 2" x 10' 9") ensuite 1.45m x 2.39m (4' 9" x 7' 10")

ST Storage HC Housekeeper's cupboard LC Linen closet A Appliance CH Air source heat cylinder  
 Plots 6, 11, 12 & 83 as shown. Plots 7, 13 & 84 are handed.

For illustrative purposes only. Specifications & layouts may be subject to change.  
 \*Available as an upgrade.

bunnyhomes

Old Callywith Road, Bodmin, Cornwall PL31 2GT  
 bunnyhomes.com 01208 244971