

introducing air source heat pumps

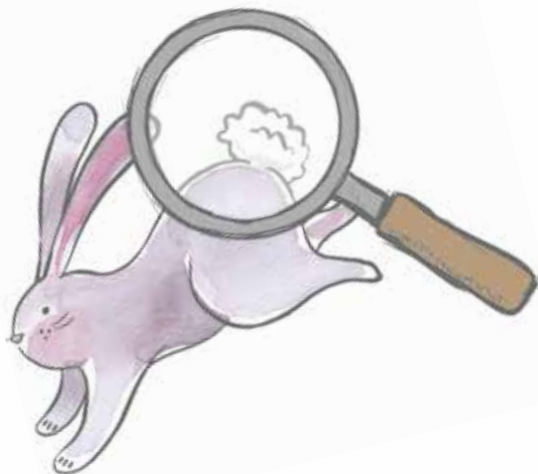


Helping you to be greener & cleaner in your bunnyhome

In line with our 'eudaemonia' way of thinking at bunnyhomes, and years ahead of the Government's new gas and oil boiler regulations for new homes (2025), we've made the move to air source heat pumps as standard at our Bramble Lane neighbourhood in Kilkhampton.

here's why:

- They're greener & cleaner than gas boilers.
- They fuel hot water & radiators.
- They've allowed us to install underfloor heating downstairs too! (No radiators means more wall space).
- They use very little energy.



the benefits

Here's some more key reasons why we're installing air source heat pumps at Bramble Lane, Kilkhampton.

1 greener

As they use the outside air to heat your home, their carbon emissions are significantly lower than traditional heating systems.

2 efficient

An air source heat pump converts 1kW of electrical energy into 3.5kW of heat energy vs an electric heater that's 1kW to 1kW.

3 long life

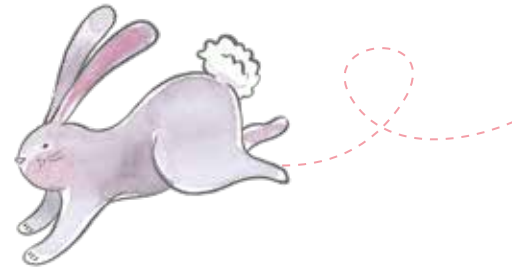
With annual servicing an air source heat pump will last up to 20 years. Longer than the average gas boiler.

4 £-saving

Combined with bunnyhomes' insulation and double glazing, enjoy lower energy bills compared with oil, LPG and electric heating.

5 techy stuff

Air source heat pumps score 3.6 SCOP (Seasonal Coefficient of Performance) = 360% efficient. That's 4 times more efficient than an old gas boiler.



the savings

| house type | new build | | second hand | | savings | |
|---------------|-----------|-------|-------------|--------|---------|-----|
| | EPC | costs | EPC | costs | | |
| Detached | B | £941 | D | £2,104 | £1,163 | 55% |
| Semi-detached | B | £744 | D | £1,793 | £1,049 | 59% |

Want to know more?
Just ask your bunnyhomes
Sales Advisor.

the techy bit

- Installed neatly on the outside of your home.
- Connected through the wall to a unit inside.
- They absorb heat from the outside air at a low temperature (even as low as -25°C).
- The heat is converted into fluid.
- The fluid goes through a compressor to increase its temperature.
- It's then transferred to your heating & hot water system.

bunnyhomes

Bramble Lane, Kilkhampton, Bude EX23 9FR
bunnyhomes.com 01288 696080

