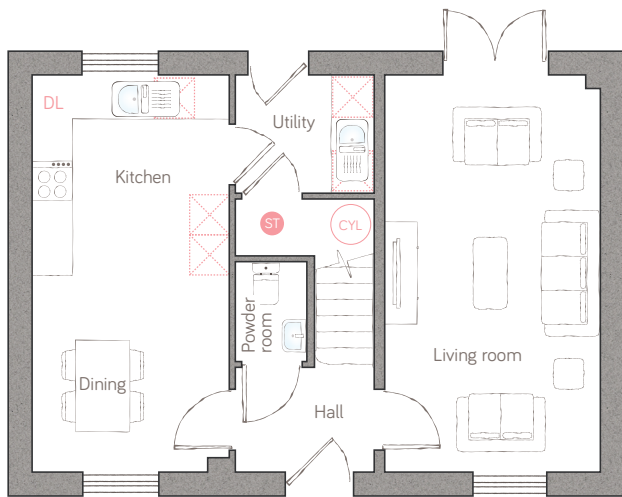




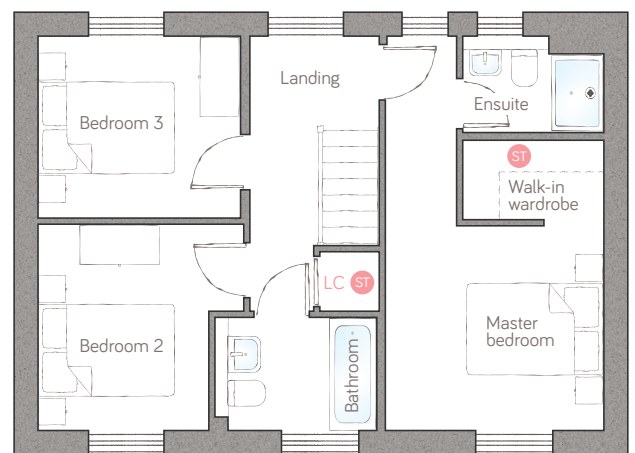
# hedgerow house

CRAFT COLLECTION • 3 BED, 2 BATH

A gorgeous double-fronted 3-bedroom home, symmetrically designed around a central hallway and staircase. Beautifully practical, the open plan kitchen diner features a utility with garden access, as well as classic double doors off the living room. The master bedroom is a real showstopper, with walk-in wardrobe and luxury ensuite.



ground floor



first floor

**kitchen** 2.96m x 2.99m (9' 8" x 9' 10")  
**dining** 2.96m x 2.93m (9' 8" x 9' 7")  
**living room** 3.22m x 5.92m (10' 7" x 19' 5")

**powder room** 1.07m x 1.50m (3' 6" x 4' 11")  
**utility** 2.08m x 1.76m (6' 10" x 5' 9")

**master suite** 3.28m x 3.07m (5.92m max) (10' 9" x 10' 1" (19' 5" max)  
**bedroom 2** 3.10m max x 3.10m (10' 2" max x 10' 2")  
**bedroom 3** 3.06m x 2.73m (10' x 8' 11")

**ensuite** 2.12m x 1.45m (6' 11" x 4' 9")  
**bathroom** 2.43m x 1.70m (8' 0" x 5' 6")

● Storage DL Demi-larder LC Linen closet □ Appliance ☉ Air source heat cylinder  
**PLOT 25**

For illustrative purposes only. Specifications and layouts may be subject to change.

**bunnyhomes**

off A39, Kilkhampton, Bude EX23 9RF  
 bunnyhomes.com 01288 696080